



THE BAYLOR FRONT ELEVATION "A"

GENERAL NOTES

FINISHED
 1ST FLOOR 1027 sq.ft.
 2ND FLOOR 1027 sq.ft.
 BONUS RM 325 sq.ft.
 ATTIC
 TOTAL 2379 sq.ft.
 UNFINISHED
 GARAGE 472 sq.ft.
 BASEMENT
 ATTIC
 ATTACHMENTS
 FRONT PORCH 28 sq.ft.
 SIDE PORCH
 DECK

DRAWN BY FORD MARCUM
 STRUCTURAL CONSULTANT
 LIBERTY HOMES, INC.

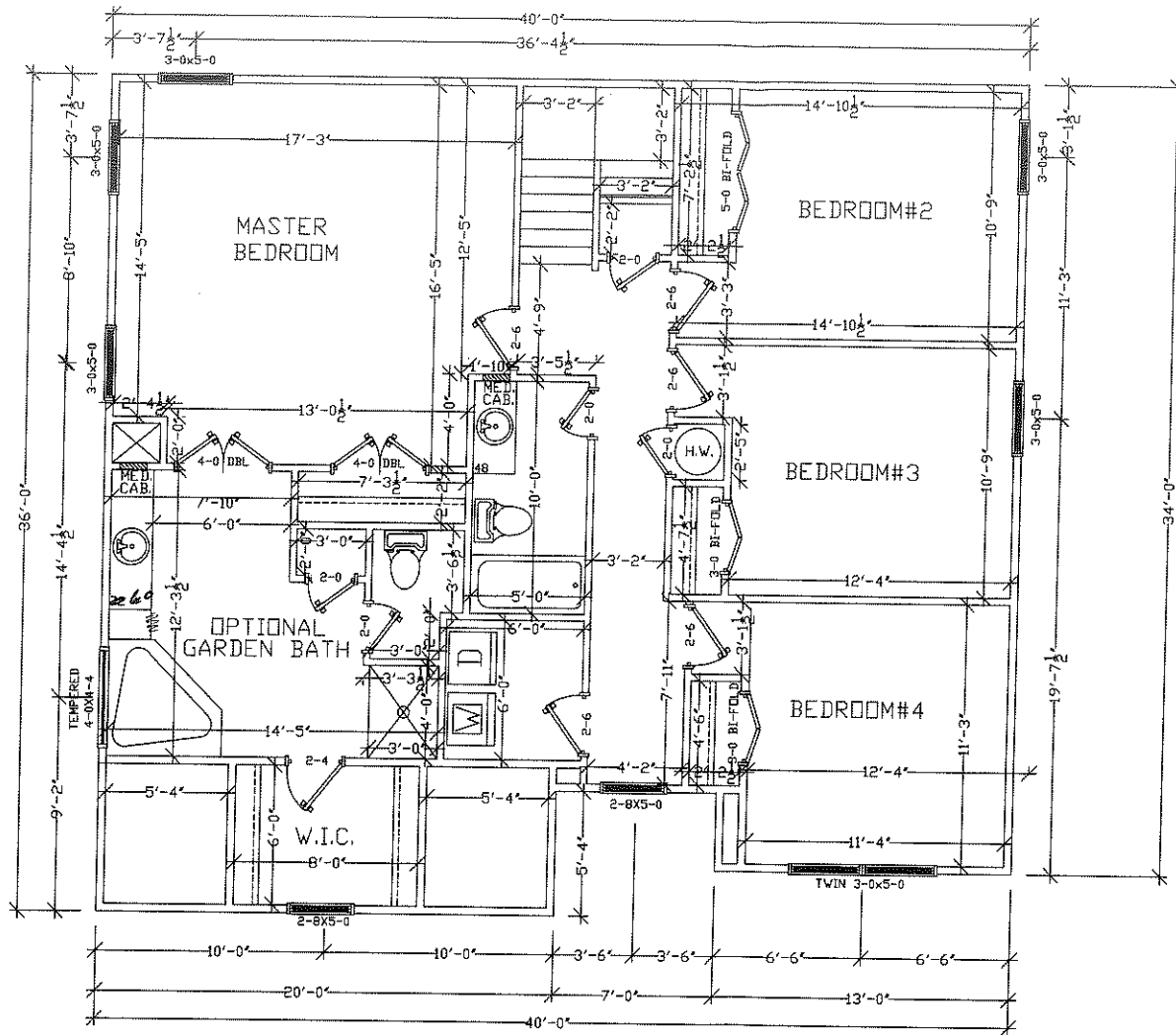
| NO. | REVISION | DATE |
|-----|----------|----------|
| | | 11/24/08 |

LIBERTY HOMES INC.
 8249 CROWN COLONY
 PARKWAY
 MECHANICSVILLE, VA. 23116
 PHONE (804) 730-7770
 FAX (804) 730-7220

BAYLOR
MASTER

| | |
|---------------------|---------|
| PROJECT BAYLOR | SHEET |
| DATE 11/24/08 | 1 OF 10 |
| SCALE 3/16"=1'0" | |

NOTE: THESE PLANS ARE DEEMED ACCURATE
 BUT ARE SUBJECT TO FIELD CHANGES DUE TO
 CODE REQUIREMENTS AND MECHANICAL SUITABILITY.
 PLEASE CONSULT SALES CONTRACT FOR
 ACTUAL ITEMS CHOSEN.



SECOND FLOOR PLAN
3/16" = 1' 0"

| GENERAL NOTES | | |
|---------------------------|------------|------|
| FINISHED | | |
| 1ST FLOOR | | |
| 2ND FLOOR | | |
| BONUS RH | | |
| BAY | | |
| TOTAL | | |
| UNFINISHED | | |
| GARAGE | | |
| BASEMENT | | |
| ATTIC | | |
| ATTACHMENTS | | |
| FRONT PORCH | | |
| SIDE PORCH | | |
| DECK | | |
| DRAWN BY FORD MARCUM | | |
| STRUCTURAL COORDINATOR | | |
| LIBERTY HOMES | | |
| NO. | REVISION | DATE |
| | | |
| LIBERTY HOMES INC. | | |
| 8249 CROWN COLONY | | |
| PARKWAY | | |
| MECHANICSVILLE, VA. 23116 | | |
| PHONE (804) 730-7770 | | |
| FAX (804) 730-7220 | | |
| BAYLOR | | |
| PROJECT | SHEET | |
| BAYLOR | 6 OF 10 | |
| DATE | | |
| SCALE | 3/16"=1'0" | |

NOTE: THESE PLANS ARE DEEMED ACCURATE BUT ARE SUBJECT TO FIELD CHANGES DUE TO CODE REQUIREMENTS AND MECHANICAL SUITABILITY. PLEASE CONSULT SALES CONTRACT FOR ACTUAL OPTIONS CHOSEN.